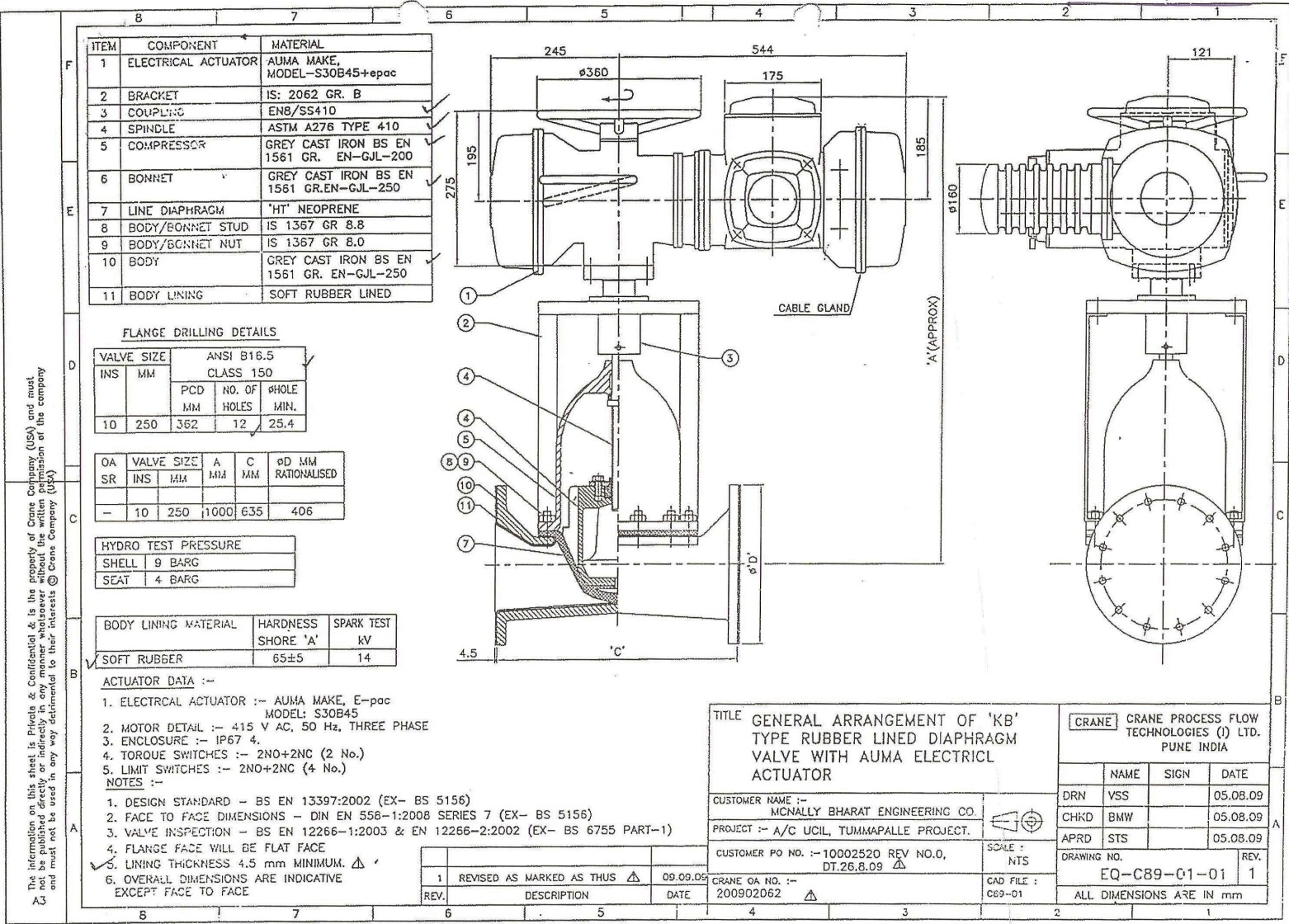


Annexure –“A”

PR no / dtd Supply of Motorized ON/OFF Diaphragm Valve

Sl. No	Material code	Material Description	Unit code	Stock in hand	Dues	Consumption rate	Item cat	Qty reqd.
1	4.024.001.509 (New) 400 024001879	Supply of KB Type Motorized ON/OFF diaphragm valve with AUMA electrical actuator Size: 250NB	01					04

1
Rajee



ON/OFF DIAPHRAGM VALVE (MOTORIZED)																																																																																									
GENERAL	1	Tag No.																																																																																							
	2	Service																																																																																							
	3	P&ID No.	Refer Sht 2 of 2																																																																																						
PROCESS DATA	4	Line No.	Line Material																																																																																						
	5	Line Size & Schedule	Line Pressure rating																																																																																						
	6	Area Classification	Non Hazardous																																																																																						
	7	Operation	ON/OFF Type Saundert Valve																																																																																						
	8	Process Fluid	Fluid Phase	Refer Sht 2 of 2				Refer Sht 2 of 2																																																																																	
	9																																																																																								
	10	Shut-off Pressure	Refer Sht 2 of 2																																																																																						
	11	Calculated C _v	NA																																																																																						
	12	Selected C _v	NA																																																																																						
	13	Allowable Noise (dBA SPL)	90 dBA at 1 m from the surface																																																																																						
VALVE BODY / BONNET	14	Manufacturer	CRANE ✓	42	Manufacturer	Model No.	AUMA	SA30B45																																																																																	
	15	Model No.	KB 250 ✓	43	Type	On-Off Motorized																																																																																			
	16	Type	Saunders Type Diaphragm Valve ✓	44	Torque Range & Speed	Min. 100 - Max. 300 Nm & 45 rpm																																																																																			
	17	Size	250 mm ✓	45	Enclosure	IP 67																																																																																			
	18	Body Material	Grey Cast Iron ✓	46	Admissible ambient temperature	-20°C to +80°C																																																																																			
	19	Body Lining	Rubber Lined ✓	47	Handwheel	Yes																																																																																			
	20	Process Connection	Flanged	48																																																																																					
	21	Flange Surface Finish	Flat Face	49																																																																																					
	22	F-F Dimension	635 mm	50	Position Limit Switches	Yes, 2 Nos.																																																																																			
	23								51	Thermo Switches	Yes, 3 Nos (One in each winding)																																																																														
TRIM	24	Bonnet Type	Standard	52																																																																																					
	25	Bonnet Material	Cast Iron	53	Motor Nominal Output	1.25 kW																																																																																			
	26	Diaphragm Material	Neoprene Rubber	54	Duty	S2-15 min																																																																																			
	27								55	Rated Voltage	Rated Frequency	415 V AC	50 Hz																																																																												
	28	Leak Tightness	ANSI B 16.104 Class VI	56	No. of Phase	3																																																																																			
	29	Type	Standard	57	Motor Starter	Integral																																																																																			
	30	Size	To be designed by manufacturer	58	Frame Size	AM 90																																																																																			
	31	Rated Travel	0 - 100%	59	Admissible voltage fluctuation	± 10%																																																																																			
	32								60	Admissible frequency fluctuation	± 5%																																																																														
	33	Characteristic	Linear	61	Torque Switch	Yes, 2 Nos.																																																																																			
TESTS	34	Stem Material	SS 304	62	Full load current	2.7 A																																																																																			
	35								63	Starting current	22.0 A																																																																														
	36								64	Full load speed	2800 rpm																																																																														
	37								65	Insulation class	Class F																																																																														
	38								66	power factor	0.81																																																																														
	39								67	Full load efficiency	79%																																																																														
	40	Testing Code	BS EN 12266 - 1:2003 & BS EN 12266 - 2:2002 (BS6755 Part-I)	68	Temp rise limited to	Class B																																																																																			
	41	Design Code	BS EN 13397:2002(BS 5156)	69	Motor Type & ref standard	Squirrel cage induction motor & IS325																																																																																			
											70																																																																														
	<p>Note : 1 All valves shall have permanently fixed type SS tag no. plate.</p>																																																																																								
<table border="1"> <tr> <td colspan="6"></td> <td>PROJECT NAME: URANIUM ORE PROCESSING PROJECT AT TUMALLAPALLE, AP, PACKAGE NO. UCTL-1</td> <td>SCALE</td> </tr> <tr> <td colspan="6"></td> <td>CLIENT : URANIUM CORPORATION OF INDIA LIMITED</td> <td>NTS</td> </tr> <tr> <td colspan="6"></td> <td>CONSULTANT : DEVELOPMENT CONSULTANTS PVT LTD</td> <td>JOB NO.</td> </tr> <tr> <td colspan="6"></td> <td>SUPPLIER : McNALLY BHARAT ENGG CO LTD</td> <td>JOB NO.</td> </tr> <tr> <td colspan="6"></td> <td></td> <td>JOB NO : 1000</td> </tr> <tr> <td colspan="6"></td> <td></td> <td>SO NO : 07011</td> </tr> <tr> <td>0</td> <td>Issued for approval</td> <td>09/10/09</td> <td>SM</td> <td>SM</td> <td>SDG</td> <td colspan="2">TITLE : DATA SHEET FOR ON/OFF DIAPHRAGM VALVE (MOTORIZED)</td> </tr> <tr> <td>REV</td> <td>REMARKS</td> <td>DATE</td> <td>BY</td> <td>CHKD</td> <td>APPD</td> <td colspan="2">MBE DOC NO : 2-MC09-DC-4-032</td> </tr> <tr> <td colspan="6"></td> <td>UCIL DRG NO : UCTL-01-DOC-1 GN-DS-032</td> <td>SHI NO</td> </tr> <tr> <td colspan="6"></td> <td colspan="2">1 OF 2</td> </tr> </table>																PROJECT NAME: URANIUM ORE PROCESSING PROJECT AT TUMALLAPALLE, AP, PACKAGE NO. UCTL-1	SCALE							CLIENT : URANIUM CORPORATION OF INDIA LIMITED	NTS							CONSULTANT : DEVELOPMENT CONSULTANTS PVT LTD	JOB NO.							SUPPLIER : McNALLY BHARAT ENGG CO LTD	JOB NO.								JOB NO : 1000								SO NO : 07011	0	Issued for approval	09/10/09	SM	SM	SDG	TITLE : DATA SHEET FOR ON/OFF DIAPHRAGM VALVE (MOTORIZED)		REV	REMARKS	DATE	BY	CHKD	APPD	MBE DOC NO : 2-MC09-DC-4-032								UCIL DRG NO : UCTL-01-DOC-1 GN-DS-032	SHI NO							1 OF 2	
						PROJECT NAME: URANIUM ORE PROCESSING PROJECT AT TUMALLAPALLE, AP, PACKAGE NO. UCTL-1	SCALE																																																																																		
						CLIENT : URANIUM CORPORATION OF INDIA LIMITED	NTS																																																																																		
						CONSULTANT : DEVELOPMENT CONSULTANTS PVT LTD	JOB NO.																																																																																		
						SUPPLIER : McNALLY BHARAT ENGG CO LTD	JOB NO.																																																																																		
							JOB NO : 1000																																																																																		
							SO NO : 07011																																																																																		
0	Issued for approval	09/10/09	SM	SM	SDG	TITLE : DATA SHEET FOR ON/OFF DIAPHRAGM VALVE (MOTORIZED)																																																																																			
REV	REMARKS	DATE	BY	CHKD	APPD	MBE DOC NO : 2-MC09-DC-4-032																																																																																			
						UCIL DRG NO : UCTL-01-DOC-1 GN-DS-032	SHI NO																																																																																		
						1 OF 2																																																																																			